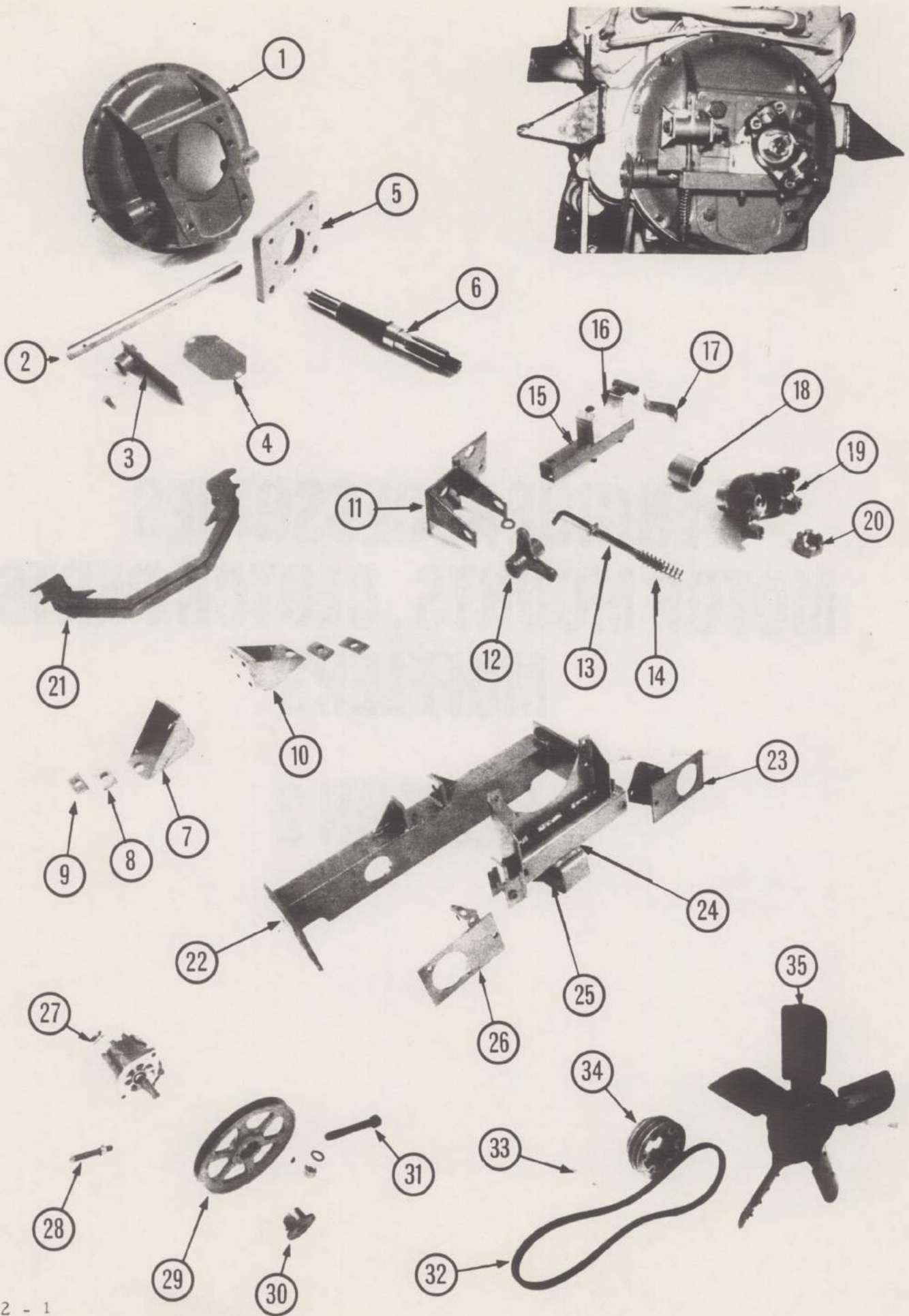


NOTES:

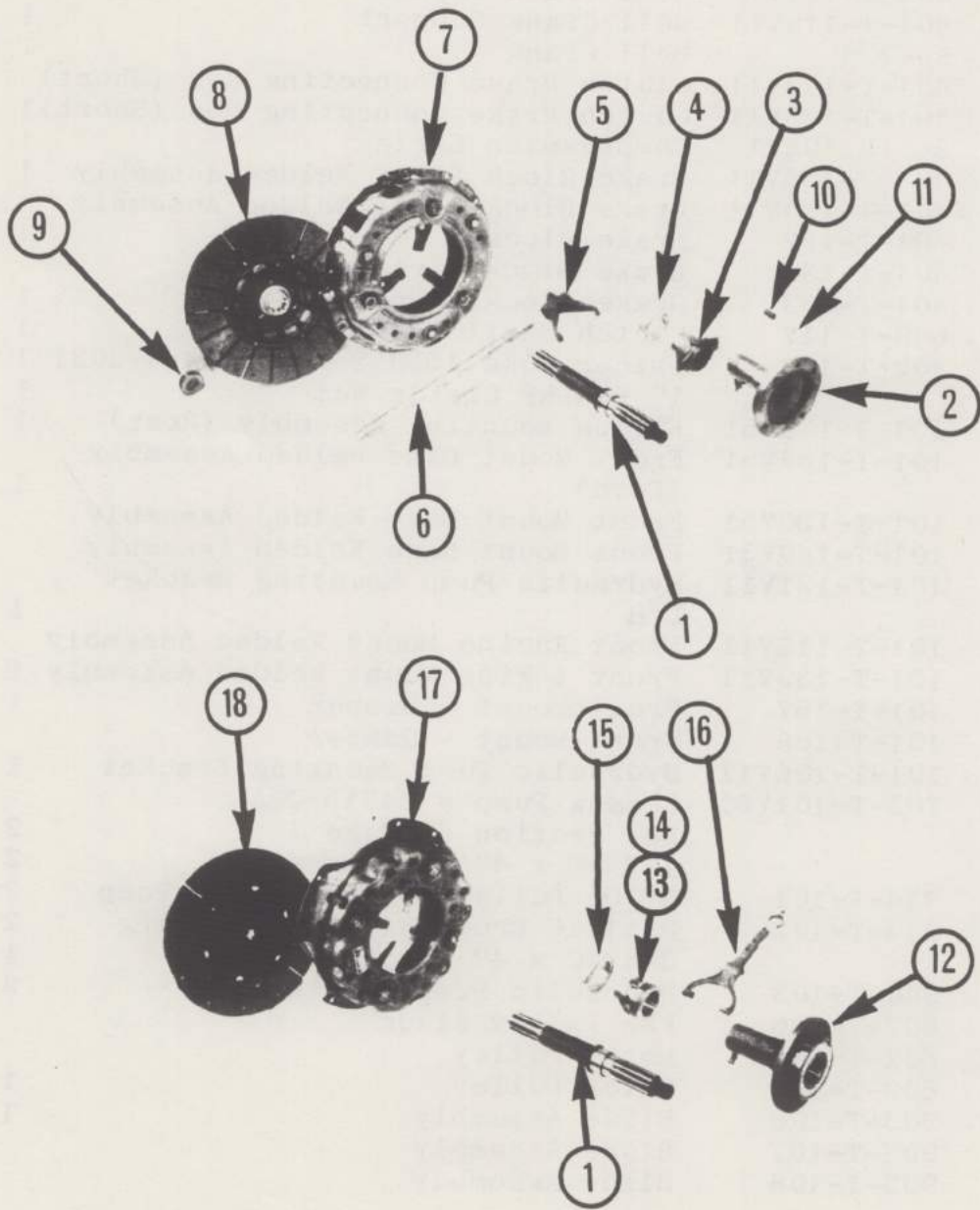
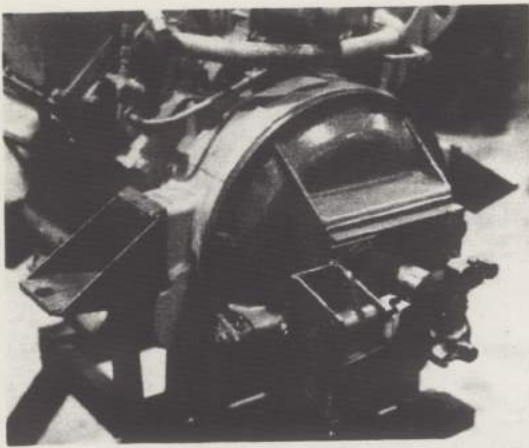
ITEM NO.	DESCRIPTION	QTY	UNIT PRICE	TOTAL
1
2
3
4
5
6
7
8
9
10
11
12
13
14
15
16
17
18
19
20
21
22
23
24
25
26
27
28
29
30
31
32
33
34
35
36
37
38
39
40
41
42
43
44
45
46
47
48
49
50
51
52
53
54
55
56
57
58
59
60
61
62
63
64
65
66
67
68
69
70
71
72
73
74
75
76
77
78
79
80
81
82
83
84
85
86
87
88
89
90
91
92
93
94
95
96
97
98
99
100

**ENGINE ACCESSORIES
MOTOR MOUNTS, CLUTCH PARTS
MUFFLERS**

SECTION 2



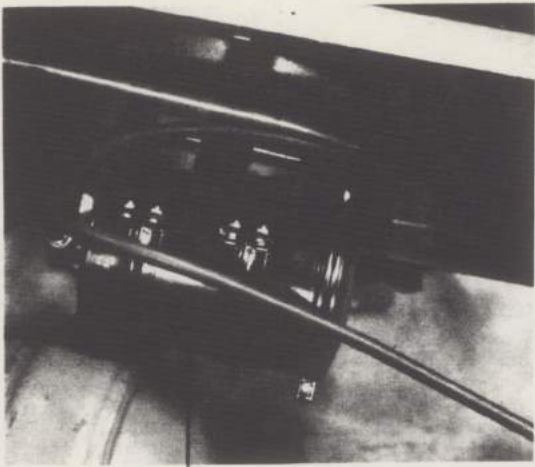
REF. NO.	VERSATILE NUMBER	DESCRIPTION	G-125	D-118	D-145
1	600-T-121	Clark SAE # 3 Clutch Housing		1	1
	600-T-123	Ford Clutch Housing # C4TA-7500H	1		
2	600-T-116	Clutch Fork Shaft		1	1
3	600-T-112	Clutch Release Arm		1	1
4	600-T-120	Bell Housing Hand Hole Cover		1	1
5	600-T-101	Clutch Bearing Plate		1	1
	600-T-103	Clutch Bearing Plate	1		
6	600-T-102	Clutch Shaft	1	1	1
7	101-T-104V11	Rear Mount Welded Assembly R/H		1	1
8	101-T-111	Rear Mount - Rubber	2	2	2
9	101-T-110	Top Plate - Back Motor Mounts	2	2	2
10	101-T-137V11	Rear Motor Mount Welded Assembly L/H		1	1
11	401-T-121V11	Bell Crank Support		1	1
	401-T-118V11	Bell Crank Support	1		
12	SW-734	Bell Crank	1	1	1
13	401-T-143V11	Clutch Brake Connecting Rod (Short)		1	1
	401-T-123V11	Clutch Brake Connecting Rod (Short)	1		
14	36.13.10.V1	Compression Spring	1	1	1
15	401-T-125V11	Brake Block Pivot Welded Assembly	1		
	401-T-130V11	Brake Block Pivot Welded Assembly		1	1
16	401-T-132	Brake Block	1	1	1
17	401-T-134	Brake Block Pivot Support		1	1
	401-T-133	Brake Block Pivot Support	1		
18	600-T-117	Clutch Shaft Yoke Spacer	1	1	1
19	902-T-104	Spicer Yoke 1550 Series # 4-4-2031	1	1	1
20		1" -14 NF Castle Nut	1	1	1
21	101-T-133V51	Engine Mounting Assembly (Rear)	1		
22	101-T-159V51	Front Mount Base Welded Assembly (Ford)	1		
	101-T-150V51	Front Mount Base Welded Assembly		1	
	101-T-149V51	Front Mount Base Welded Assembly			1
23	101-T-121V11	Hydraulic Pump Mounting Bracket L/H	1	1	1
24	101-T-112V11	Front Engine Mount Welded Assembly		1	1
	101-T-139V11	Front Engine Mount Welded Assembly	1		
25	101-T-167	Front Mount - Damper	1		1
	101-T-168	Front Mount - Damper		1	
26	101-T-126V11	Hydraulic Pump Mounting Bracket	1	1	1
27	705-T-101V51	Cessna Pump # 24315-OBAA			
		See Section 6, Page 1	2	2	2
28		1/2 NC x 4" Set Screw	2	2	2
29	914-T-101	8" OD Pulley for Hydraulic Pump	2	2	2
30	914-T-102	H 11/16 Browning Split Bushing	2	2	2
31		3/4 NC x 4" Hex Head Bolt	1	1	1
32	900-T-103	Hydraulic Pump Belt # B-48	2	2	2
33	602-T-106	Fan Pulley Studs		6	6
34	602-T-104	Motor Pulley		1	1
	602-T-107	Motor Pulley	1		
35	903-T-106	Blade Assembly	1		
	903-T-107	Blade Assembly		1	
	903-T-108	Blade Assembly			1



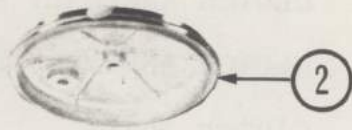
DIESELS

FORD

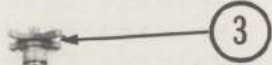
REF. NO.	VERSATILE NUMBER	DESCRIPTION	QTY.
CLUTCH ASSEMBLY - LOOSE PARTS			
CLUTCH ASSEMBLY FOR TRACTOR MODELS D-118, D-145			
1	600-T-102	Clutch Shaft	1
2	600-T-109	Release Bearing Assembly Sleeve	1
3	600-T-115	Release Bearing Carrier	1
4	901-T-117	Release Bearing	1
5	600-T-111	Clutch Fork	1
6	600-T-116	Clutch Fork Shaft	1
7	600-T-128V51	Clutch Assembly	1
8	600-T-129V11	Clutch Disc	1
9	36.01.13.V1	Bearing	1
10	600-T-118	Release Bearing Backspring	1
11	600-T-119	Spring Clip	1
CLUTCH ASSEMBLY FOR TRACTOR MODEL G-125			
12	600-T-107	Release Bearing Assembly Sleeve	1
13	600-T-108	Release Bearing Carrier	1
14		1/4 x 1/8 x 1-7/8 ID Felt Ring	1
15	901-T-117	Release Bearing	1
16	601-T-110	Clutch Fork	1
17	600-T-126	Clutch Assembly	1
18	600-T-127	Disc Assembly	1



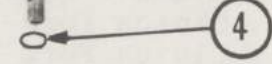
1



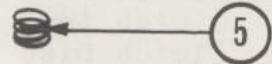
2



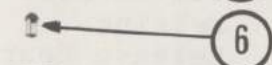
3



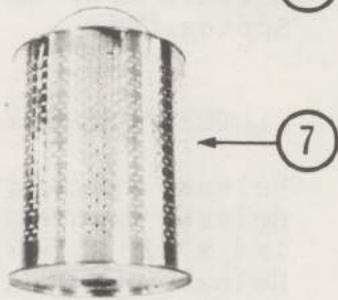
4



5



6



7



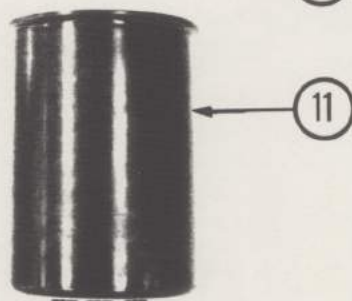
8



9



10



11



12



13

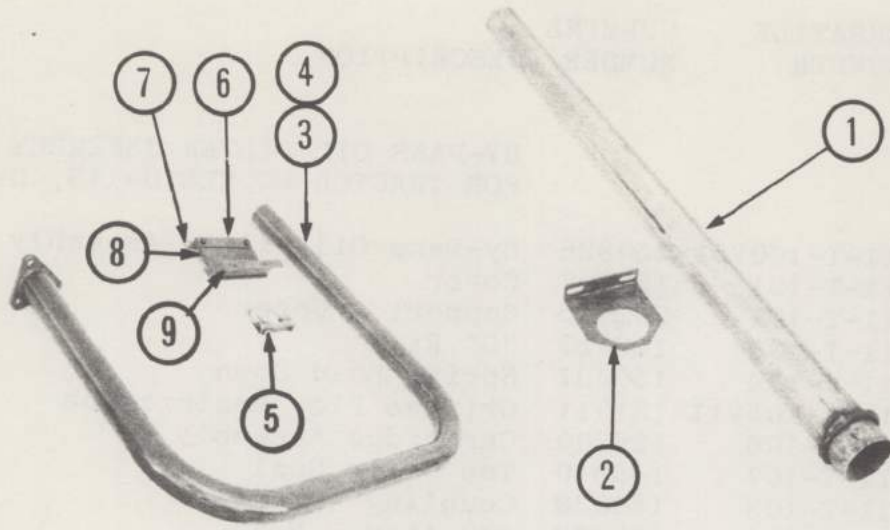


14

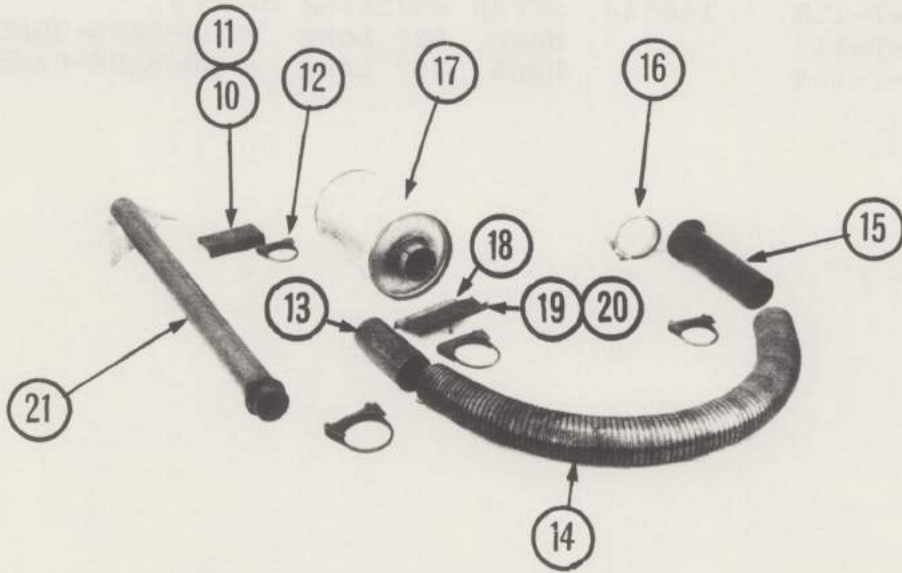
15

REF. NO.	VERSATILE NUMBER	CUMMINS NUMBER	DESCRIPTION	QTY.
BY-PASS OIL FILTER ASSEMBLY FOR TRACTOR MODELS D-118, D-145				
1	711-T-100V51	250826	By-Pass Oil Filter Assembly	1
2	711-T-101	159667	Cover	1
3	711-T-102	252055	Support - Upper	1
4	711-T-103	116029	"O" Ring	1
5	711-T-104	150037	Spring Hold Down	1
6	711-T-105V11	131911	Orifice Flow Restriction	1
7	711-T-106	136500	Cartridge Assembly	1
8	711-T-107	145640	Top Cover Seal	1
9	711-T-108	150038	Coupling - Half	1
10	711-T-109	150039	Coupling - Half	1
11	711-T-110	252135	Shell Assembly	1
12	711-T-111	250163	Bracket Mounting	1
13	711-T-112	145665	Strap Mounting Bracket	1
14	711-T-113		Hose, 52" Long # D8-HA06-08MB x 08MB	1
15	711-T-114		Hose, 35" Long # D8-HA06-08MB x 06MB	1

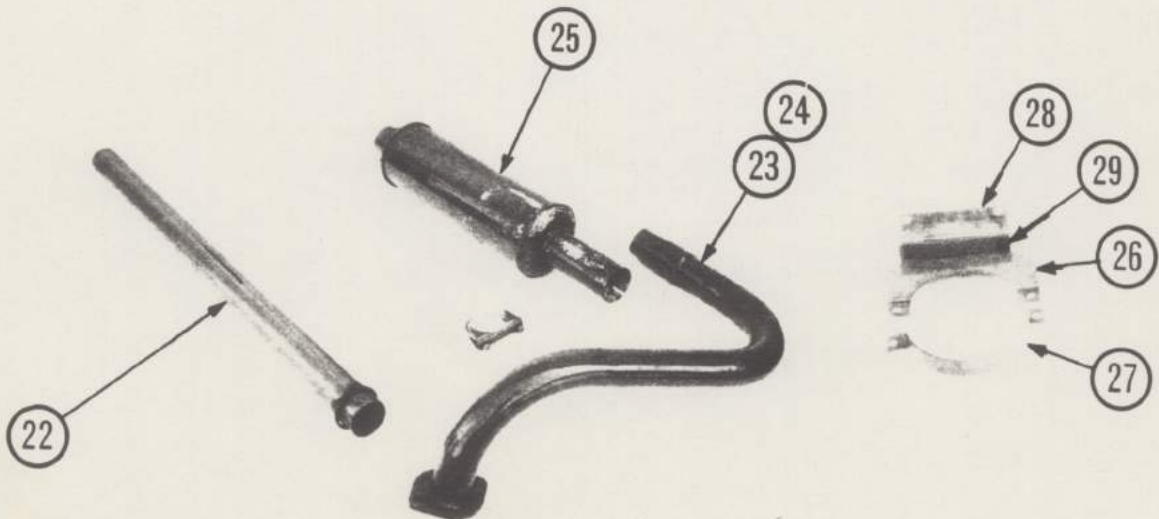
MODEL G 125



D 150

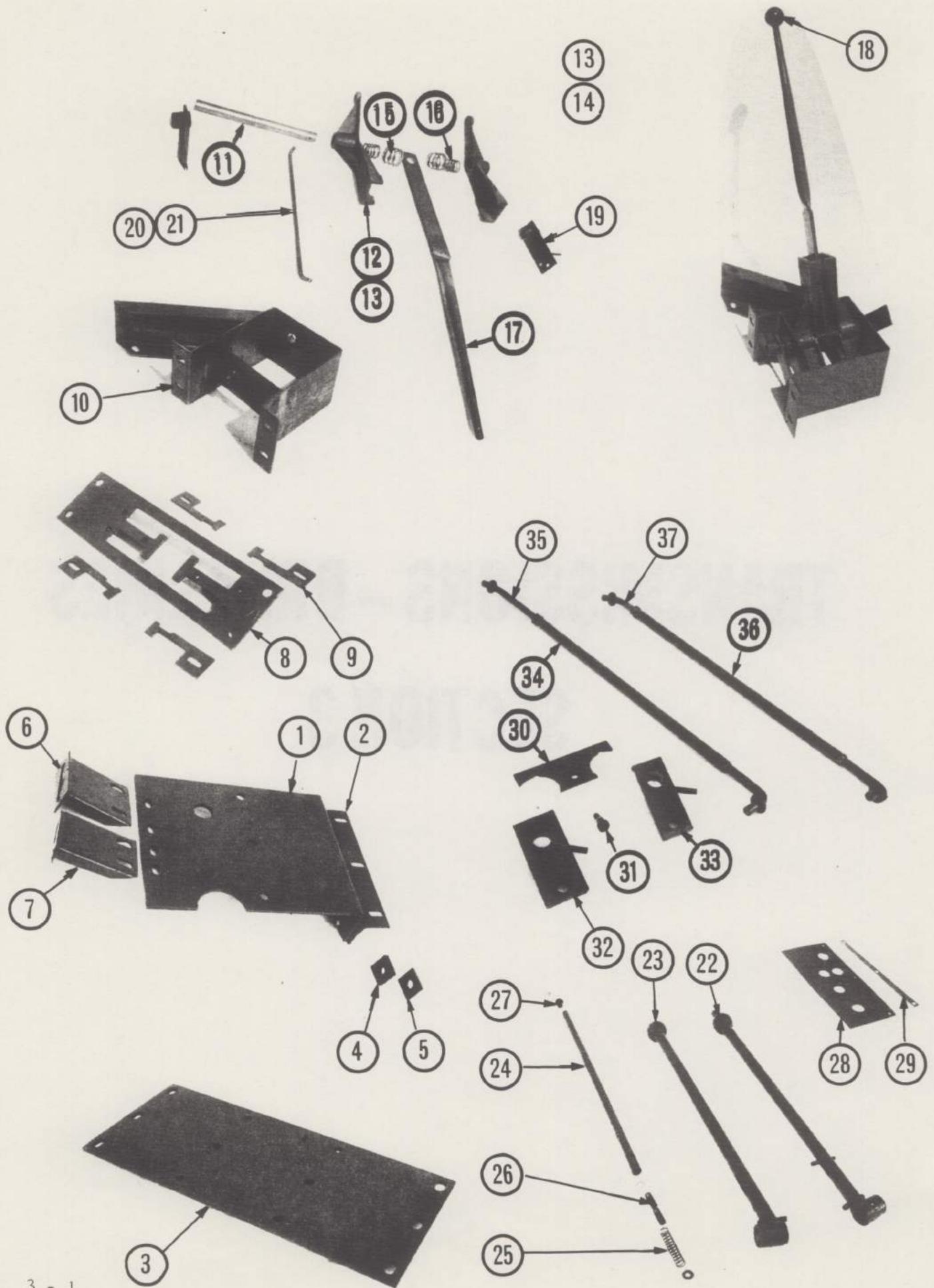


D 118

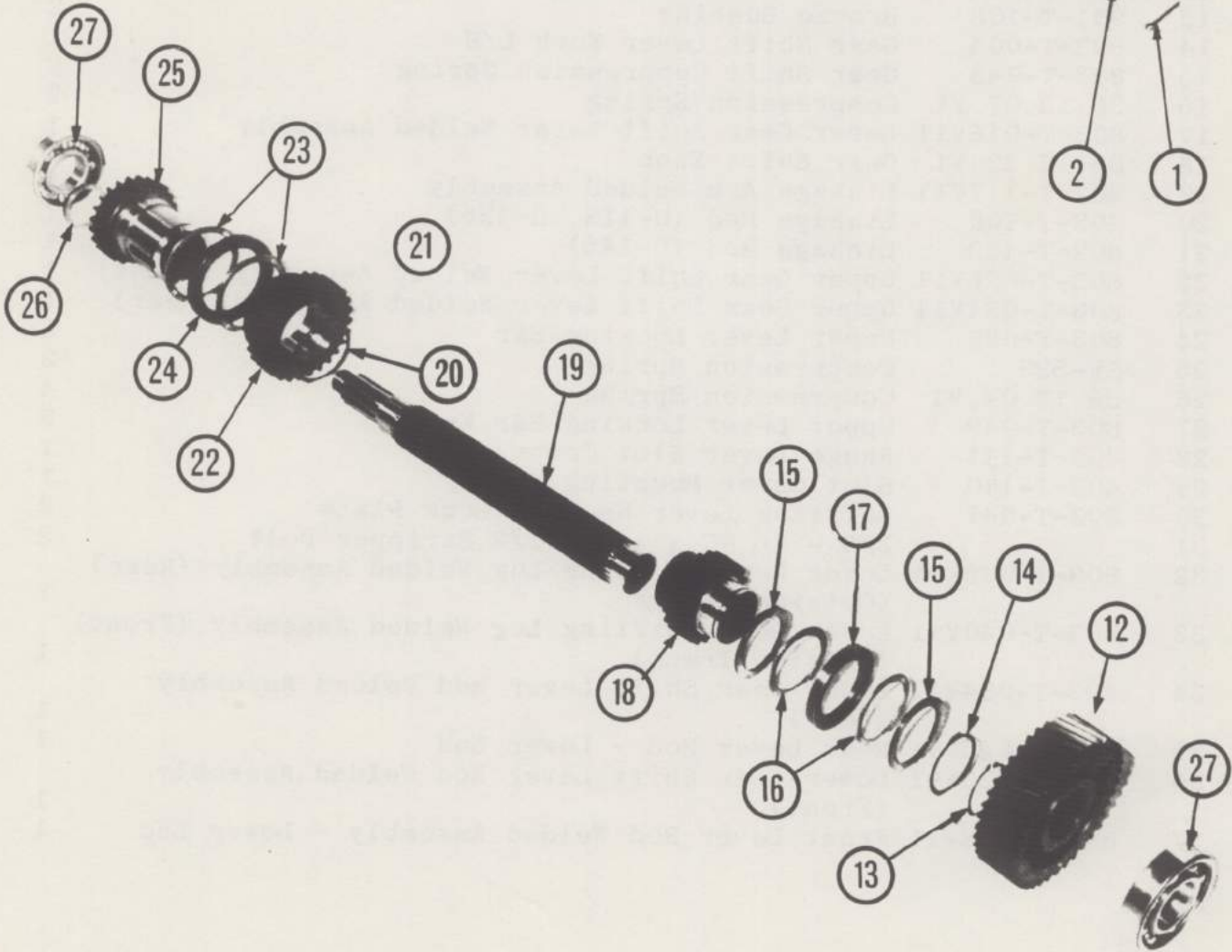
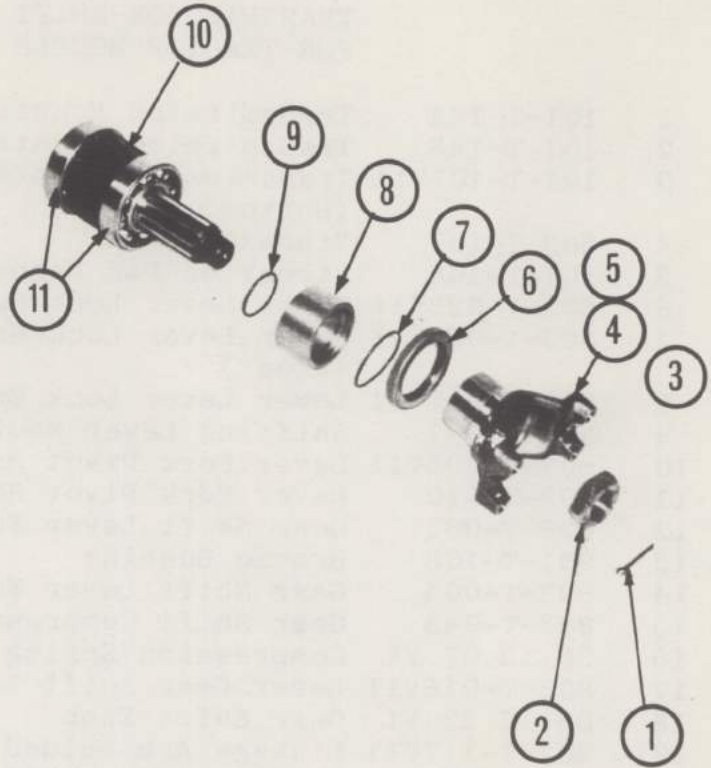
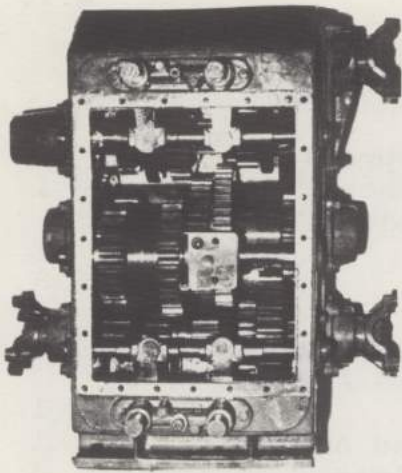


REF. NO.	VERSATILE NUMBER	DESCRIPTION - EXHAUST ASSEMBLIES	QTY.
<u>FORD V-8 G-125</u>			
1	606-T-107	Exhaust Pipe - Straight Extension	2
2	606-T-112	Mounting Bracket (Upper) - Exhaust Pipe	2
3	606-T-105V11	Exhaust Pipe Welded Assembly R/H	1
4	606-T-102V11	Exhaust Pipe Welded Assembly L/H	1
5		2-1/2" Muffler Clamp	2
6	606-T-110	Hanger Back Plate - Exhaust Pipe	4
7	606-T-108	Offset Hanger Bracket - Exhaust Pipe	2
8	606-T-109	Hanger Bracket - Exhaust Pipe	2
9	606-T-111	Exhaust Pipe Hanger Mounting Plate	2
<u>CUMMINS V-8 D-145</u>			
10	606-T-117	R/H Mounting Bracket (Upper) - Exhaust Pipe	1
11	606-T-143	L/H Mounting Bracket (Upper) - Exhaust Pipe	1
12		3" Muffler Clamp	8
13	606-T-133	Extension Pipe - Exhaust Pipe	2
14	606-T-131	Exhaust Flex Hose	2
15	606-T-132V11	Extension Pipe Welded Assembly (Manifold End) - Exhaust	2
16	606-T-121	Exhaust Clamp - Manifold	2
17	606-T-123	Muffler (Donaldson # MFM-0800018)	2
18	606-T-108	Hanger Offset Bracket - Exhaust Pipe	2
19	606-T-118	R/H Mounting Bracket - Exhaust Pipe	1
20	606-T-144	L/H Mounting Bracket - Exhaust Pipe	1
21	606-T-125V11	Muffler Extension Pipe	2
<u>CUMMINS V-6 D-118</u>			
22	606-T-147V11	Muffler Extension Pipe	2
23	606-T-135V11	Exhaust Pipe Welded Assembly R/H	1
24	606-T-136V11	Exhaust Pipe Welded Assembly L/H	1
25	606-T-122	Muffler (Donaldson # MFMOS-5009)	2
26	606-T-141	Hanger Bracket - Exhaust Extension Pipe	2
27	606-T-142	Hanger Clamp - Exhaust Extension Pipe	2
28	606-T-108	Hanger Offset - Exhaust Pipe	2
29	606-T-110	Hanger Back Plate - Exhaust Pipe	2
30		2-1/2" Muffler Clamp	2

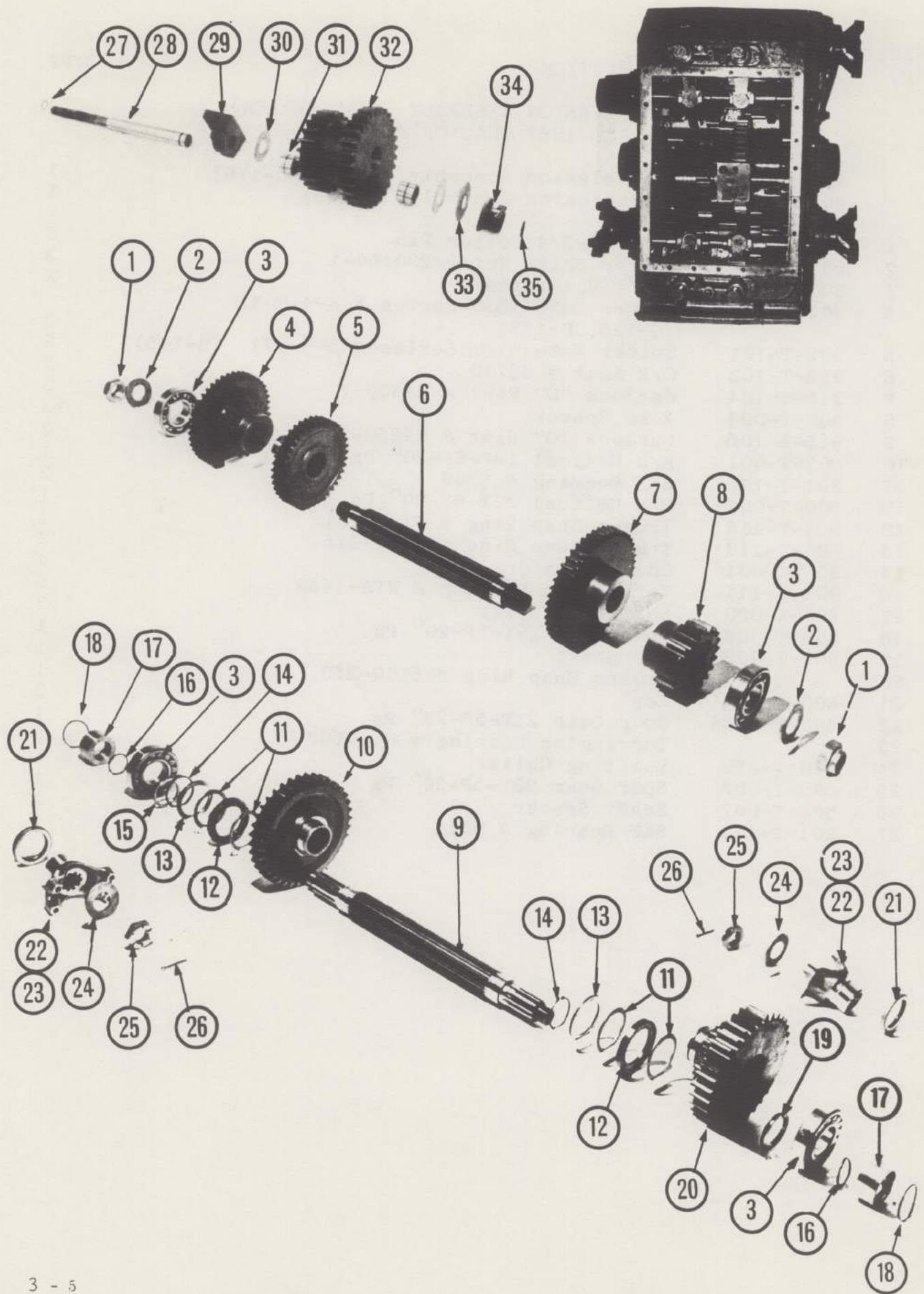
TRANSMISSIONS – DRIVELINES
SECTION 3



REF. NO.	VERSATILE NUMBER	DESCRIPTION	QTY.
TRANSMISSION SHIFT MOUNTING ASSEMBLY FOR TRACTOR MODELS G-125, D-118, D-145			
1	101-T-144	Transmission Mounting Plate (Upper)	1
2	101-T-145	Transmission Mounting Plate Bracket	1
3	101-T-107V11	Transmission Mounting Plate Welded Assembly (Bottom)	1
4	603-T-108	Vibration Pad	3
5	101-T-146	Vibration Pad Washer	3
6	803-T-023V11	Upper Lever Lock Bracket Welded Assembly (Rear)	1
7	803-T-020V11	Upper Lever Lock Bracket Welded Assembly (Front)	1
8	803-T-011V11	Lower Lever Lock Bracket Welded Assembly	1
9	803-T-047	Shifting Lever Neutral Lock Plate	4
10	803-T-005V11	Lever Fork Pivot Bracket Welded Assembly	1
11	803-T-010	Lever Fork Pivot Shaft	1
12	803-T-003	Gear Shift Lever Fork R/H	1
13	901-T-108	Bronze Bushing	2
14	803-T-004	Gear Shift Lever Fork L/H	1
15	803-T-048	Gear Shift Compression Spring	2
16	36.13.07.V1	Compression Spring	2
17	803-T-016V11	Lever Gear Shift Lever Welded Assembly	1
18	36.12.33.V1	Gear Shift Knob	1
19	402-T-117V11	Linkage Arm Welded Assembly	2
20	402-T-109	Linkage Rod (D-118, G-125)	1
21	402-T-123	Linkage Rod (D-145)	1
22	803-T-026V11	Upper Gear Shift Lever Welded Assembly (Front)	1
23	803-T-031V11	Upper Gear Shift Lever Welded Assembly (Rear)	1
24	803-T-030	Upper Lever Locking Bar	2
25	SW-529	Compression Spring	2
26	36.13.04.V1	Compression Spring	4
27	803-T-049	Upper Lever Locking Bar Knob	2
28	403-T-111	Range Lever Slot Cover	1
29	403-T-110	Slot Cover Mounting Strip	1
30	803-T-047	Shifting Lever Neutral Lock Plate	2
31		3/8 - 16 NC x 1/2 x 1/2 Stripper Bolt	2
32	803-T-043V11	Lower Gear Shifting Lug Welded Assembly (Rear) (Outside Trans)	1
33	803-T-040V11	Lower Gear Shifting Lug Welded Assembly (Front) (Outside Trans)	1
34	803-T-034V11	Lower Gear Shift Lever Rod Welded Assembly (Rear)	1
35	803-T-045V11	Rear Lever Rod - Lower End	1
36	803-T-033V11	Lower Gear Shift Lever Rod Welded Assembly (Front)	1
37	803-T-038V11	Front Lever Rod Welded Assembly - Lower End	1



REF. NO.	VERSATILE NUMBER	DESCRIPTION	QTY.
		TRANSMISSION ASSEMBLY ("A" SERIES) FOR ALL 1967 TRACTOR MODELS	
	800-T-046V91	Transmission Assembly (G-125, D-118)	1
	801-T-003V91	Transmission Assembly (D-145)	1
1		1/8 x 2-3/4 Cotter Pin	3
2	901-T-109	Spicer Shaft Nut # 230160-1	3
3	800-T-034	Shaft Nut Washer	3
4	902-T-102	Spicer Yoke 1550 Series # 4-4-2041 (G-125, D-118)	3
5	902-T-101	Spicer Yoke 1600 Series # 5-4-771 (D-145)	3
6	915-T-103	C/R Seal # 23710	3
7	915-T-104	Garlock "O" Ring # 24850-7	3
8	800-T-024	Yoke Spacer	13
9	915-T-105	Garlock "O" Ring # 24850-2	3
10	800-T-001	R/H Helical 19T-6P-20° Pa.	1
11	901-T-115	SKF Bearing # 6309	2
12	800-T-002	R/H Helical 39T-6P-20° Pa.	1
13	901-T-114	Truarc Snap Ring # 5100-231	1
14	901-T-110	Truarc Snap Ring # 5100-275	3
15	800-T-031	Collar Spacer	4
16	901-T-111	Torrington Bearing # NTA-4458	6
17	800-T-030	Shifting Collar	3
18	800-T-004	Spur Gear 19T-5P-20° Pa.	1
19	800-T-003	Top Shaft	1
20		Truarc Snap Ring # 5100-350	1
21	800-T-054	Key	2
22	800-T-005A	Spur Gear 27T-5P-20° Pa.	1
23		Torrington Bearing # NTA-6074	2
24	800-T-029	Shifting Collar	1
25	800-T-005	Spur Gear 23T-5P-20° Pa.	1
26	800-T-007	Shaft Spacer	2
27	901-T-113	SKF Bearing # 6311	2



13

REF. NO.	VERSATILE NUMBER	DESCRIPTION	QTY.
		TRANSMISSION ASSEMBLY ("A" SERIES) FOR ALL 1967 TRACTOR MODELS	
	800-T-046V91	Transmission Assembly (G-125, D-118)	1
	801-T-003V91	Transmission Assembly (D-145)	1
1	901-T-116	1-1/2 - 12 NF Cone Lock Nut	2
2	800-T-033	Cone Lock Nut Spacer	2
3	901-T-112	SKF Bearing # 21311	4
4	800-T-011A	Cluster Gear, 43T and 20T	1
5	800-T-009	Spur Gear, 39T-5P-20° Pa.	1
6	800-T-013	Center Shaft	1
7	800-T-008	Spur Gear, 47T-5P-20° Pa.	1
8	800-T-006	Spur Gear, 22T-4P-20° Pa.	1
9	800-T-016	Bottom Shaft	1
10	800-T-015	Spur Gear, 36T-4P-20° Pa.	1
11	901-T-111	Torrington Bearing # NTA-4458	6
12	800-T-030	Shifting Collar	3
13	800-T-031	Collar Spacer	4
14	901-T-110	Truarc Snap Ring # 5100-275	3
15	800-T-007	Shaft Spacer	2
16	915-T-105	Garlock "O" Ring # 24850-2	3
17	800-T-024	Yoke Spacer	3
18	915-T-104	Garlock "O" Ring # 24850-7	3
19	800-T-053	Shaft Spacer	1
20	800-T-014	Cluster Gear, 34T and 23T	1
21	915-T-103	C/R Seal # 23710	3
22	902-T-102	Spicer Yoke, 1550 Series # 4-42041 (G-125, D-118)	3
23	902-T-101	Spicer Yoke, 1600 Series # 5-4-771 (D-145)	3
24	800-T-034	Shaft Nut Washer	3
25		Spicer Shaft Nut # 230160-1	3
26		1/8 x 2-3/4 Cotter Pin	3
27	915-T-101	Garlock "O" Ring # 24849-19	1
28	800-T-041	Reverse Gear Shaft	1
29	800-T-040	Shaft Support	1
30	800-T-059	Reverse Gear Brass Washer	2
31	915-T-102	Torrington Bearing # HJ202820	2
32	800-T-020	Reverse Gear, 29T and 24T	1
33	800-T-034	Shaft Nut Washer	1
34	800-T-060V11	Reverse Gear Spacer Welded Assembly	1
35	900-T-100	Garlock "O" Ring # 24849-15	1