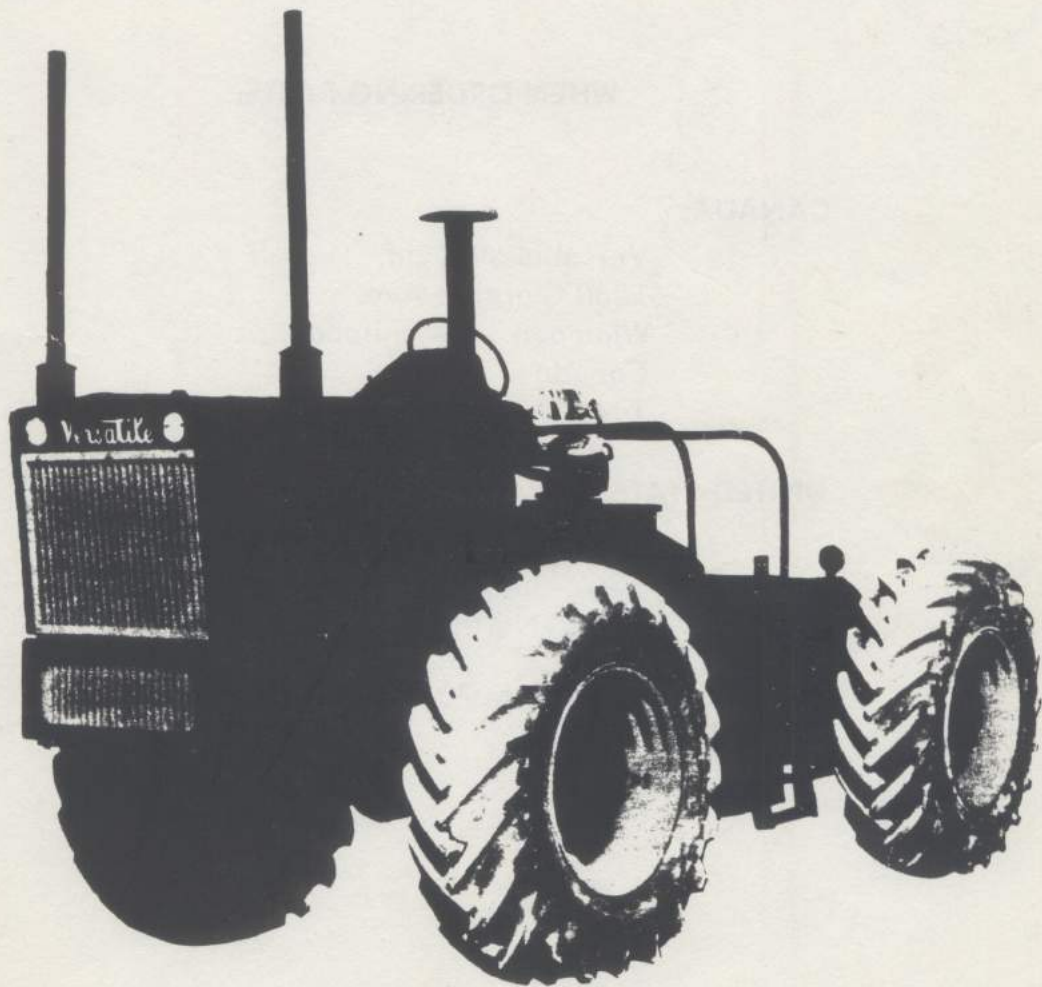


Versatile

MANUFACTURING LTD.

QUALITY FARM IMPLEMENTS

**MODELS D118 - G125
AND D145
4 WHEEL DRIVE TRACTORS**



PARTS BOOK

1967

57611830

Versatile

MANUFACTURING LTD.

1260 CLARENCE AVE. WINNIPEG 19, MANITOBA

WHEN ORDERING PARTS:

CANADA:

Versatile Mfg. Ltd.
1260 Clarence Ave.
Winnipeg 19, Manitoba
Canada
Area Code 204 - 474-2431

UNITED STATES:

Versatile Parts Inc.
3202-7th Ave. N. Box 1041
Fargo - North Dakota
58102
Area Code 701 - 237-6241

INTRODUCTION

- SECTION 1 — FRONT FRAME LOOSE PARTS
HOOD — FUEL TANKS, PEDALS, AIR FILTERS
- SECTION 2 — ENGINE ACCESSORIES
MOTOR MOUNTS, CLUTCH PARTS, MUFFLERS
- SECTION 3 — TRANSMISSIONS — DRIVELINES
- SECTION 4 — REAR FRAME
DRAW BAR, SUB-FRAME, TIRES
- SECTION 5 — AXLES
- SECTION 6 — HYDRAULICS
- SECTION 7 — ELECTRICAL
- SECTION 8 — COOLING AND FUEL SYSTEM

*Cobs - Mandosa - out of business
Fenico -*

I N D E X

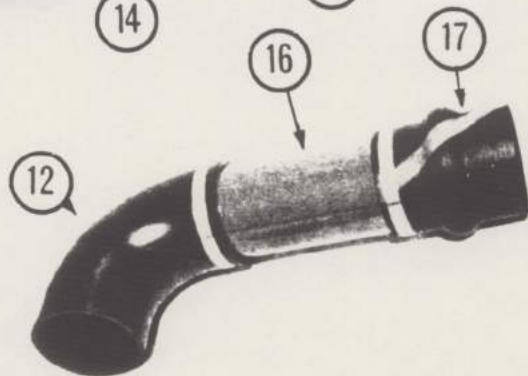
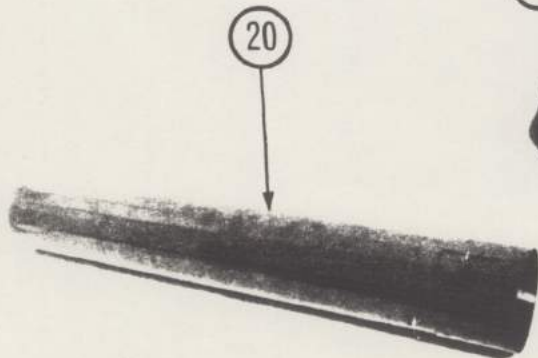
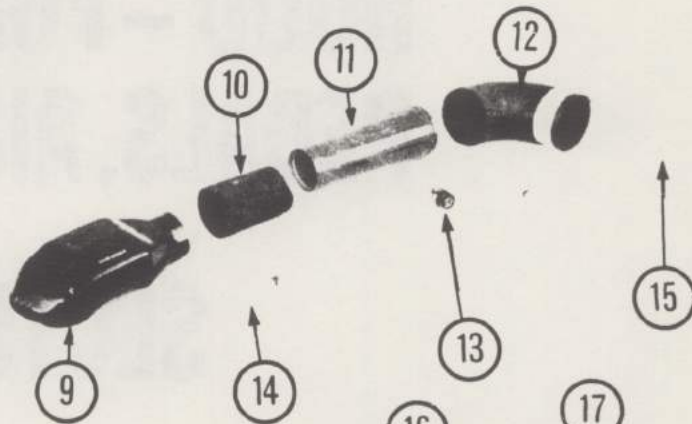
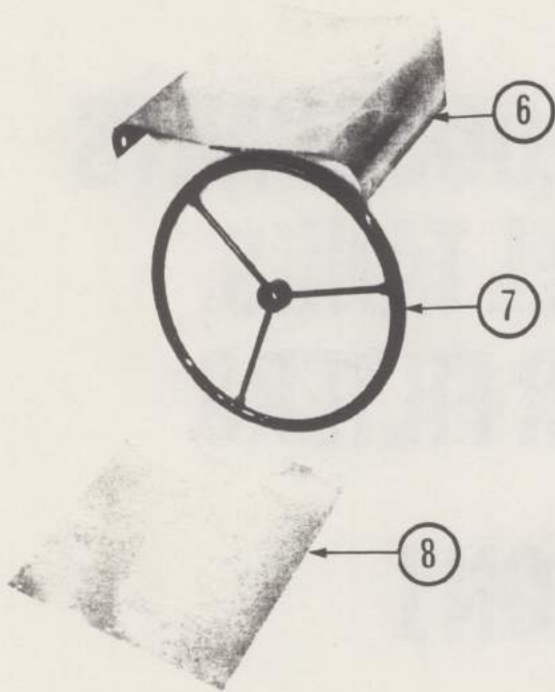
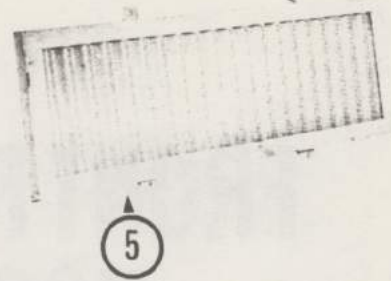
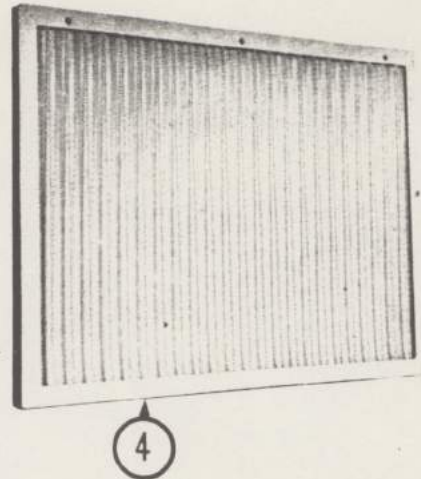
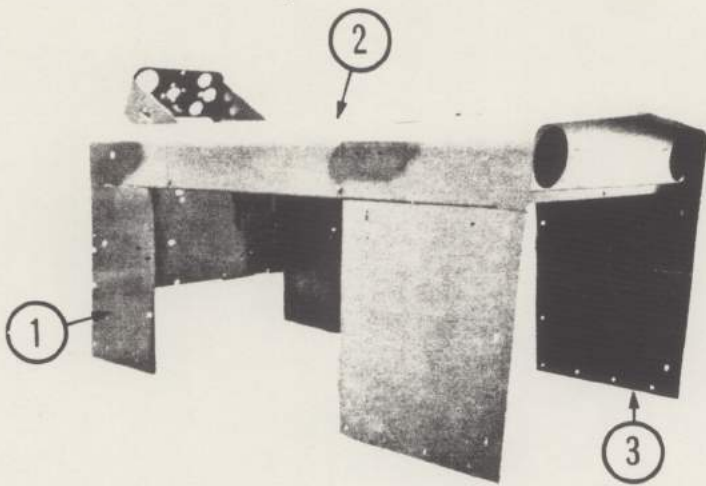
	<u>Sect.</u>	<u>Page</u>
Air Cleaner Cummins V-8 and V-6	1	- 10
Air Cleaner Ford V-8	1	- 8
Brake Assembly	5	- 16
Brake Pedal - Linkage	1	- 6
By-Pass Oil Filter Assembly	2	- 6
Cessna Pump Assembly	6	- 2
Char-Lynn Control Valve	6	- 4
Char-Lynn Steering Control Unit	6	- 10
Char-Lynn Steering Valve Complete	6	- 10
Clark 17000 Series Axle (Front)	5	- 2
Clark 17000 Series Axle (Rear)	5	- 4
Clark 17600 Series Axle (Front)	5	- 6
Clark 17600 Series Axle (Rear)	5	- 8
Clutch Assembly - Loose Parts	2	- 4
Clutch Pedal - Linkage and Clutch Brake - Linkage	1	- 6
Cooling System, Ford V-8	8	- 4
Cooling System, V-6 and V-8 Diesel	8	- 6
Cushion Suspension Seat Assembly	1	- 12
Differential and Carrier Assembly for 17000 and 17600 Series (Front)	5	- 10
Differential and Carrier Assembly (Rear Drive) for 17000 and 17600 Series	5	- 12
Drawbar Assembly	4	- 4
Drive Lines, V-6 Diesel and V-8 Gas	3	- 8
Electrical System, Ford V-8	7	- 2
Electrical System, Cummins V-8 and V-6	7	- 4
Exhaust Assemblies	2	- 8
Filter Assembly	6	- 14
A Frame Assemblies, Front and Rear	4	- 2

	<u>Sect.</u> <u>Page</u>
Fuel Lines	8 - 8
Front and Rear Handrails, Fenders, Fuel Tank, Battery Box, Seat Mounting Assemblies	1 - 4
Gresen Control Valve Assembly (2-Spool Unit)	6 - 8
Hood Assemblies, Front and Rear	1 - 2
Hydraulic Control Lever Complete Assembly (Gresen Control Valve)	1 - 6
Hydraulic Control Lever Complete Assembly (Char-Lynn Control Valve)	1 - 6
Hydraulic Steering Circuit	6 - 16
Hydraulic Steering Cylinder Assembly	6 - 12
Implement Hydraulic System using Char-Lynn Control Valve	6 - 20
Implement Hydraulic System using Gresen Control Valve	6 - 18
Orbitrol Column	6 - 10
Planet Spider Assembly	5 - 14
Rad and Shroud Assembly	8 - 2
Relief Valves	6 - 6
Tires, Rims, Tie Bolts	4 - 6
Transmission Assembly ("A" Series)	3 - 4
Transmission Assembly ("A" Series)	3 - 6
Transmission Shift Mounting Assembly	3 - 2
Throttle Lever - Linkage	1 - 6

NOTES:

**FRONT FRAME LOOSE PARTS
HOOD – FUEL TANKS,
PEDALS, AIR FILTERS**

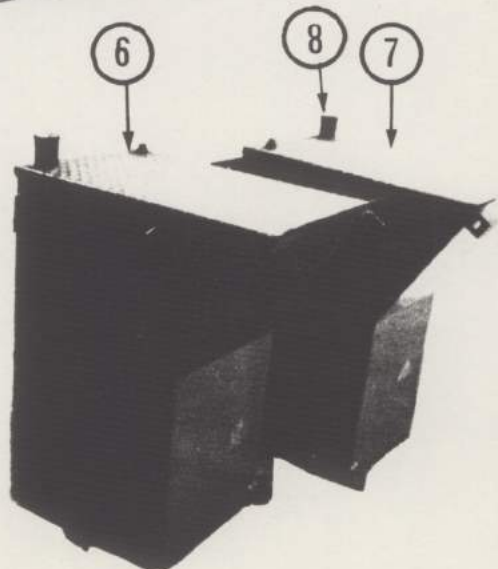
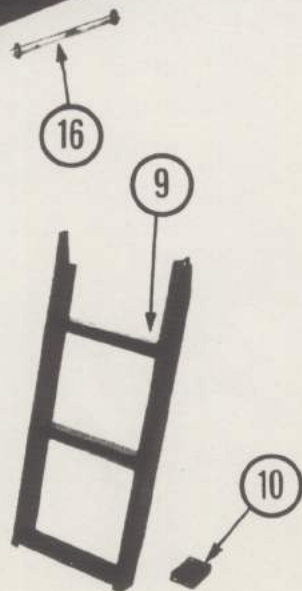
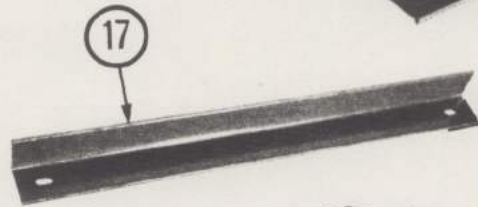
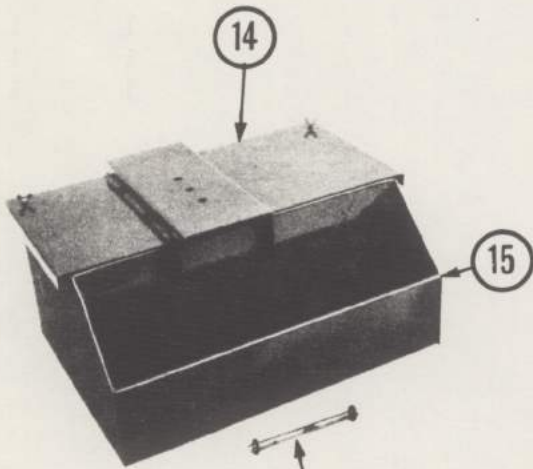
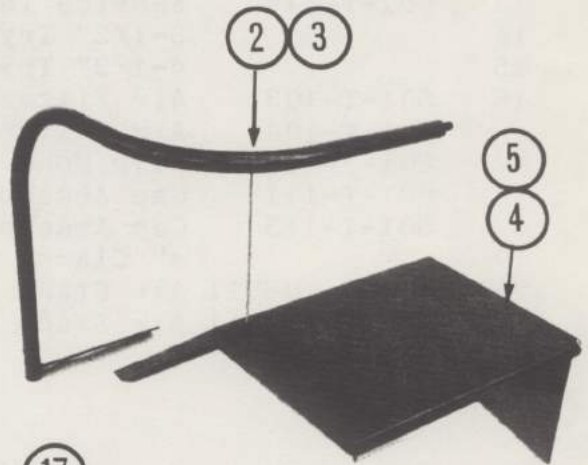
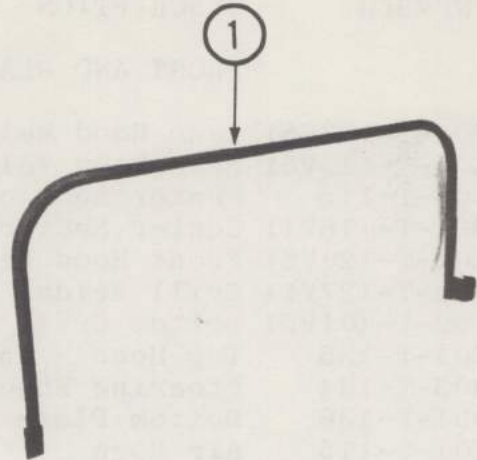
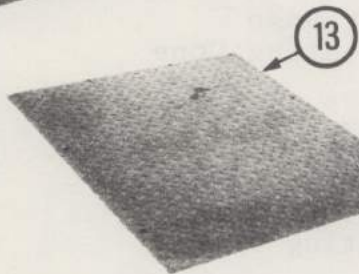
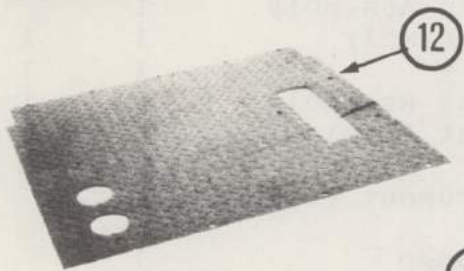
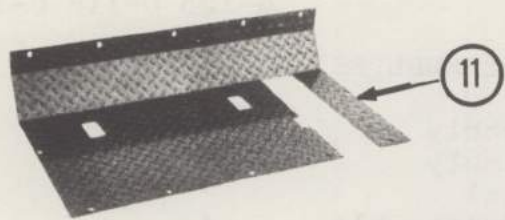
SECTION 1



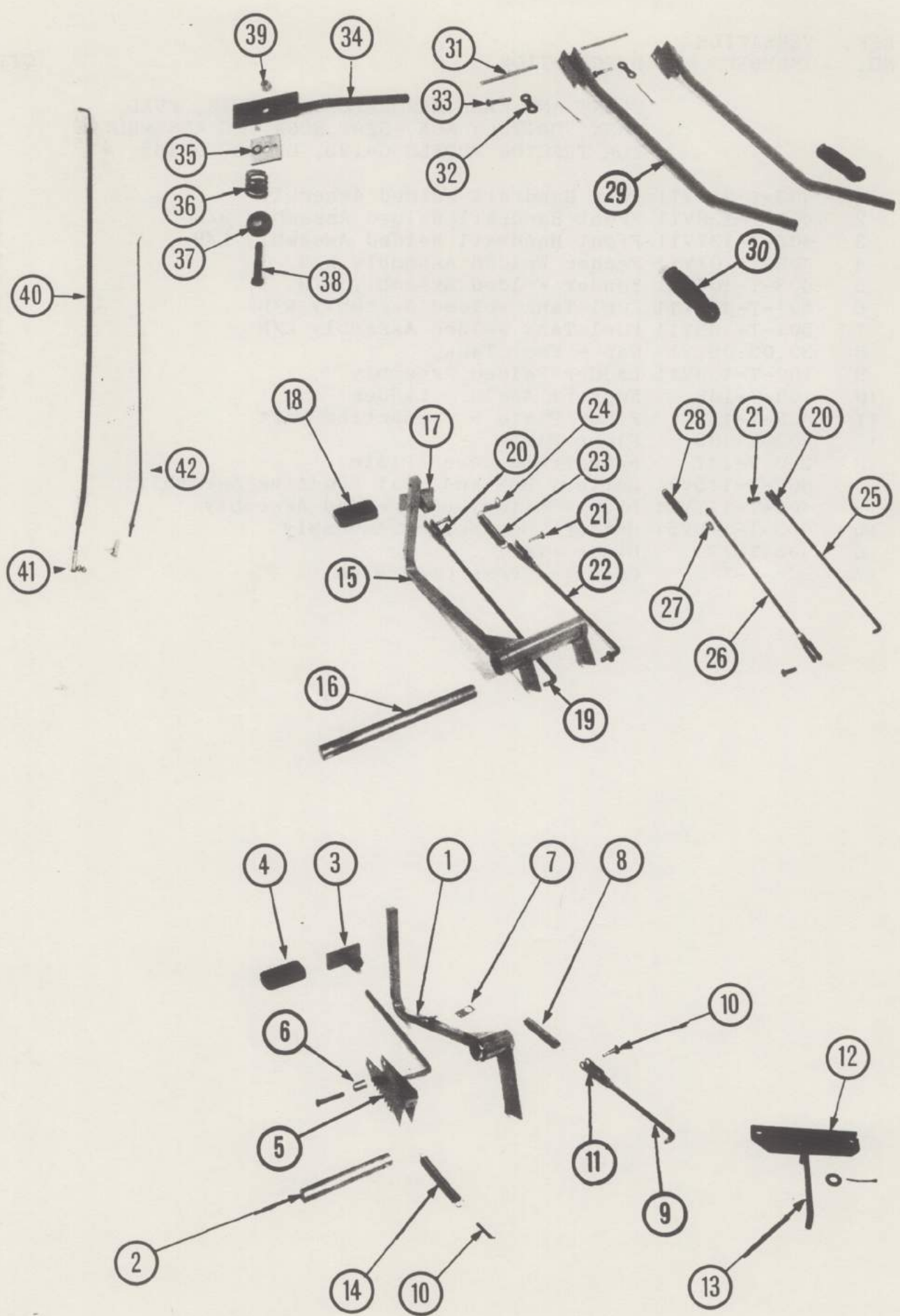
REF.	VERSATILE		G-125 D-118 D-145		
NO.	NUMBER	DESCRIPTION			

FRONT AND REAR HOOD ASSEMBLIES

1	301-T-103V51	Rear Hood Welded Assembly	1		
	301-T-113V51	Rear Hood Welded Assembly		1	1
2	301-T-115	Center Section - Diesel		1	1
	301-T-116V11	Center Section Welded Assembly	1		
3	301-T-120V51	Front Hood Welded Assembly	1	1	1
4	301-T-127V11	Grill Welded Assembly	1	1	1
5	302-T-101V51	Bottom Grill Mounting Assembly	1	1	1
6	301-T-135	Top Hood - Instrument Panel	1	1	1
7	403-T-144	Steering Wheel	1	1	1
8	301-T-136	Bottom Plate - Instrument Panel	1	1	1
9	601-T-115	Air Horn	1		
10	601-T-105	Chartered Radiator Hose	1		
11	601-T-101	Air Breather Connecting Cone	1		
12	601-T-109	Gates 90° Elbow	1	1	1
13	601-T-114	Service Indicator	1	1	1
14		3-1/2" Trydon Clamp	1		
15		4-1/2" Trydon Clamp	1		
16	601-T-103	Air Filter Connecting Tube		1	
	601-T-104	Air Filter Connecting Tube			1
17	601-T-110	Hump Hose		1	1
18	601-T-111	Cap Assembly			1
	601-T-113	Cap Assembly	1	1	
19		4" Clamp	1	1	1
20	601-T-106V11	Air Stack	1	1	
	601-T-107V11	Air Stack			1



REF. NO.	VERSATILE NUMBER	DESCRIPTION	QTY.
FRONT AND REAR HANDRAILS, FENDERS, FUEL TANK, BATTERY BOX, SEAT MOUNTING ASSEMBLIES FOR TRACTOR MODELS G-125, D-118, D-145			
1	403-T-134V11	Rear Handrail Welded Assembly	1
2	403-T-138V11	Front Handrail Welded Assembly R/H	1
3	403-T-137V11	Front Handrail Welded Assembly L/H	1
4	403-T-101V11	Fender Welded Assembly R/H	1
5	403-T-105V11	Fender Welded Assembly L/H	1
6	501-T-104V11	Fuel Tank Welded Assembly R/H	1
7	501-T-103V11	Fuel Tank Welded Assembly L/H	1
8	32.03.06.V1	Cap - Fuel Tank	2
9	100-T-149V11	Ladder Welded Assembly	2
10	100-T-148	Support Angle - Ladder	2
11	403-T-112	Floor Plate - Connecting Part	1
12	403-T-109	Floor Plate	1
13	200-T-147	Rear Frame Cover Plate	1
	403-T-115V91	Battery Box and Seat Mounting Assembly	1
14	403-T-117V11	Lid - Battery Box Welded Assembly	1
15	403-T-116V51	Battery Box Welded Assembly	1
16	403-T-129	Hinge Pin	1
17	500-T-110	Guard - Cross Over Pipe	1



REF. NO.	VERSATILE NUMBER	DESCRIPTION	G-125	D-118	D-145
----------	------------------	-------------	-------	-------	-------

BRAKE PEDAL - LINKAGE

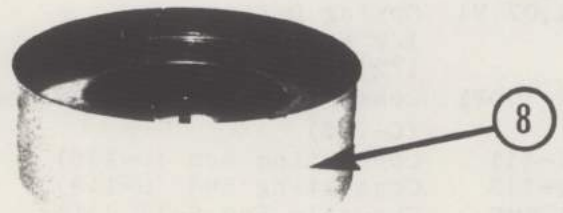
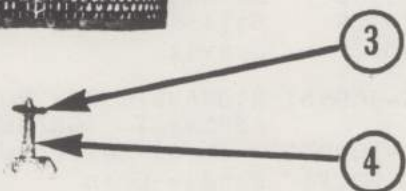
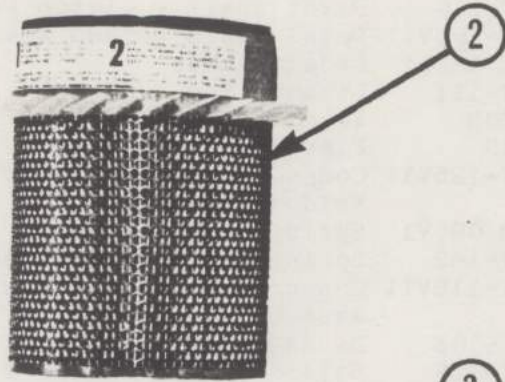
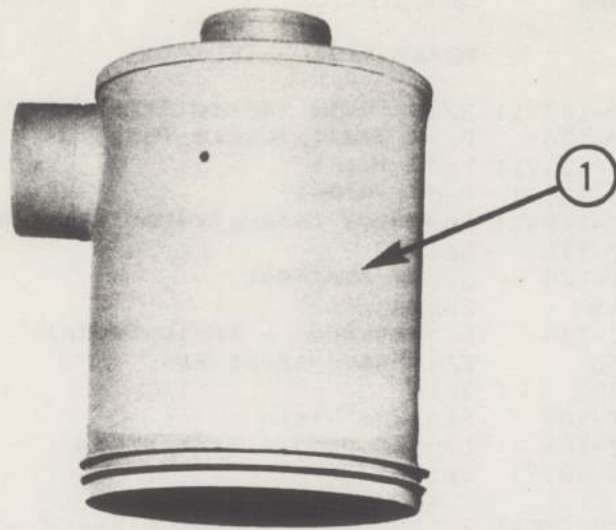
1	402-T-102V11	Brake Pedal Welded Assembly	1	1	1
2	402-T-106	Pivot Shaft -Brake Pedal	1	1	1
3	402-T-121V11	Pedal Plate	1	1	1
4	28.03.18.V1	Pedal Rubber	1	1	1
5	402-T-112V11	Emergency Brake Welded Assembly	1	1	1
6	402-T-116	Spacer	1	1	1
7	402-T-124	Spring Bracket	1	1	1
8	SW-115	Spring	1	1	1
9	402-T-110	Linkage Rod - Arm to Pedal	1	1	1
10	SW-713	Flat Head Rivet Pin	2	2	2
11	SW-1203	Yoke	1	1	1
12	402-T-107	Linkage Plate	1	1	1
13	402-T-108	Linkage Rod - Brake Drum	1	1	1
14	36.13.09.V1	Spring	1	1	1

CLUTCH PEDAL - LINKAGE AND CLUTCH BRAKE - LINKAGE

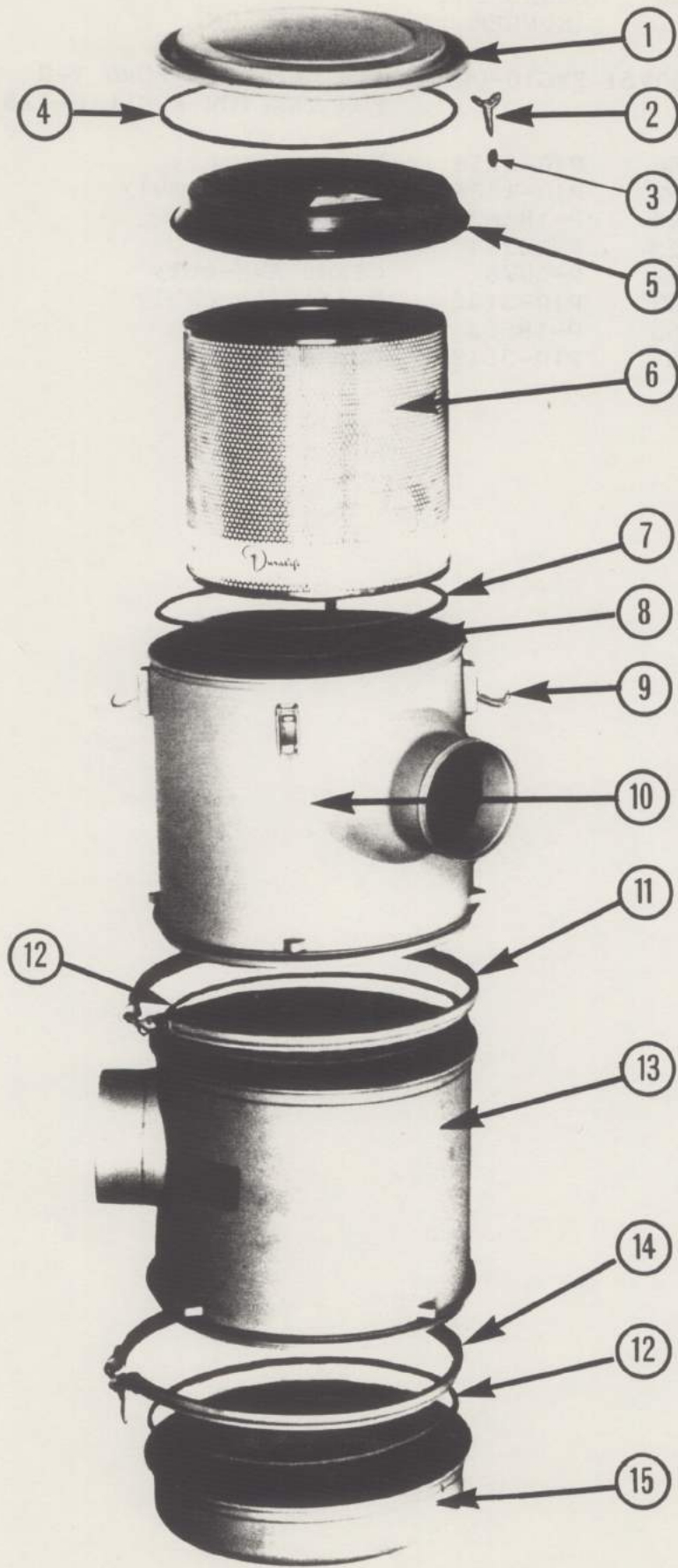
15	401-T-102V11	Pedal - Clutch Welded Assembly	1	1	1
16	401-T-110	Pivot Shaft - Clutch Pedal	1	1	1
17	401-T-106V11	Pedal Plate Welded Assembly	1	1	1
18	28.03.18.V1	Pedal Rubber	1	1	1
19	401-T-111	Linkage Rod - Clutch		1	1
20	SW-1203	Yoke	2	2	2
21	SW-713	Flat Head Rivet Pin	2	2	2
22	401-T-135V11	Connecting Rod - Clutch Brake (Long) Welded Assembly		1	1
23	36.13.09.V1	Spring		1	1
24	401-T-142	Spring Clip - Brake Pedal Return		1	1
25	401-T-116V11	Connecting Rod - Clutch Brake Welded Assembly	1		
26	401-T-108	Linkage Rod - Clutch	1		
27	401-T-139	Ball Nut 3/8 - 24 NF Ford # 351062-S	1		
28	SW-115	Spring	1		
	404-T-109V51	HYDRAULIC CONTROL LEVER COMPLETE ASSEMBLY (GRESEN CONTROL VALVE)	1	1	1
29	404-T-104V11	Control Lever Welded Assembly	2	2	2
30	36.14.28.V1	Handle Grip	3	3	3
31	404-T-110	Control Lever -Pivot Rod	2	2	2
32	913-T-001	Pivot Link for Gresen Control Valve	4	4	4
33	404-T-107	Rivet Pin (Short) Control Lever	2	2	2
	404-T-102V51	HYDRAULIC CONTROL LEVER COMPLETE ASSEMBLY (CHAR-LYNN CONTROL VALVE)	2	2	2
29	404-T-104	Control Lever Welded Assembly	1	1	1
30	36.14.28.V1	Handle Grip	3	3	3
33	404-T-107	Control Lever Rivet Pin (Short)	1	1	1
	404-T-103	Rivet Pin - Control Lever (Long)	1	1	1

THROTTLE LEVER - LINKAGE

34	400-T-102V11	Throttle Lever Welded Assembly	1	1	1
35	400-T-109	Friction Washer	1	1	1
36	36.13.07.V1	Compression Spring	1	1	1
37	25.01.07.V1	Spring Retainer	1	1	1
38		1/2 NC - 2-3/4 Bolt	1	1	1
39		1/2 NC Self Locking Nut	1	1	1
40	400-T-105V11	Connecting Pipe Welded Assembly (G-125)	1		
	400-T-111	Connecting Rod (D-145)			1
	400-T-113	Connecting Rod (D-118)		1	
41	913-T-102	Throttle End Ball Joint	1	1	1

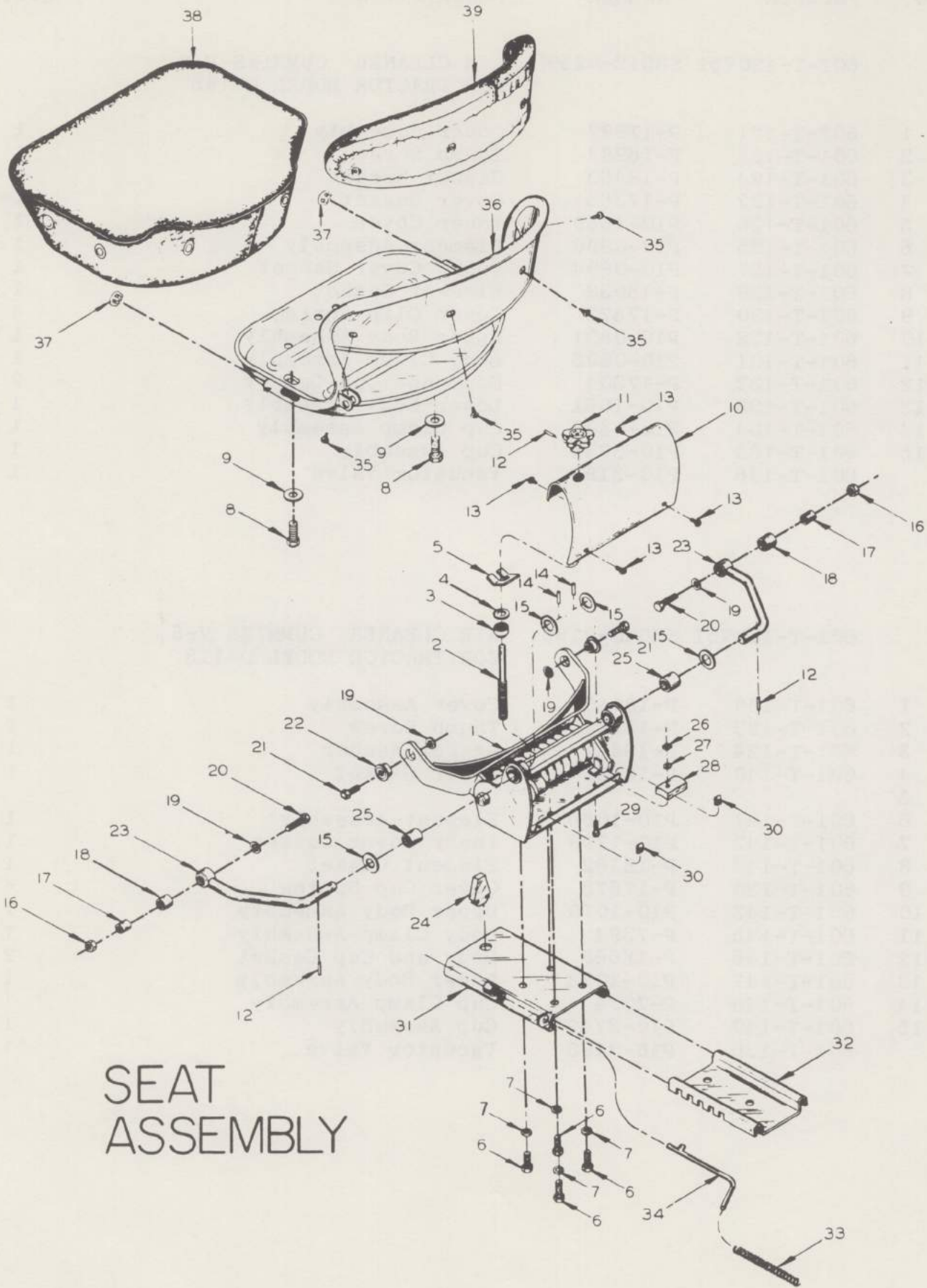


REF. NO.	VERSATILE NUMBER	DONALDSON NUMBER	DESCRIPTION	QTY.
	601-T-150V51	FWG10-0003	AIR CLEANER FORD V-8 FOR TRACTOR MODEL G-125	1
1	601-T-156	P10-3518	Body Assembly	1
2	601-T-152	P10-1234	Element Assembly	1
3	601-T-124	P-18462	Gasket Washer	1
4	601-T-123	P-16984	Thumb Screw	1
5	606-T-151	P-5978	Clamp Assembly	1
6	601-T-153	P10-3135	Baffle Assembly	1
7	601-T-155	P-18663	Cup Gasket	1
8	601-T-154	P10-3519	Cup Assembly	1



REF. NO.	VERSATILE NUMBER	DONALDSON NUMBER	DESCRIPTION	QTY.
	601-T-120V51	SBG12-0259	AIR CLEANER CUMMINS V-8 FOR TRACTOR MODEL D-145	
1	601-T-121	P-17897	Cover Assembly	1
2	601-T-123	P-16984	Thumb Screw	1
3	601-T-124	P-18462	Gasket Washer	1
4	601-T-122	P-17365	Cover Gasket	1
5	601-T-126	P10-1669	Inner Cover	1
6	601-T-125	P10-0890	Element Assembly	1
7	601-T-127	P10-0894	Inner Cover Gasket	1
8	601-T-129	P-18033	Element Gasket	1
9	601-T-130	P-17673	Cover Clip Spring	4
10	601-T-128	P10-0891	Upper Body Assembly	1
11	601-T-131	P10-0895	Body Clamp Assembly	1
12	601-T-132	P-17804	Body and Cup Gasket	2
13	601-T-133	P10-1061	Lower Body Assembly	1
14	601-T-134	P10-0808	Cup Clamp Assembly	1
15	601-T-135	P10-3744	Cup Assembly	1
	601-T-136	P10-3198	Vacuator Valve	1

	601-T-138V51	SBG10-0168	AIR CLEANER CUMMINS V-6 FOR TRACTOR MODEL D-118	
1	601-T-139	P-18180	Cover Assembly	1
2	601-T-123	P-16984	Thumb Screw	1
3	601-T-124	P-18462	Gasket Washer	1
4	601-T-140	P-18181	Cover Gasket	1
5				
6	601-T-141	P10-1066	Element Assembly	1
7	601-T-142	P10-1798	Inner Cover Gasket	1
8	601-T-144	P-18182	Element Gasket	1
9	601-T-130	P-17673	Cover Cup Spring	4
10	601-T-143	P10-1070	Upper Body Assembly	1
11	601-T-145	P-7394	Body Clamp Assembly	1
12	601-T-146	P-18663	Body and Cup Gasket	2
13	601-T-147	P10-1078	Lower Body Assembly	1
14	601-T-148	P-7394	Cup Clamp Assembly	1
15	601-T-149	P10-3742	Cup Assembly	1
	601-T-136	P10-3198	Vacuator Valve	1



SEAT ASSEMBLY

REF. NO.	VERSATILE NUMBER	MANUFACTURERS NUMBER	DESCRIPTION	QTY.
	912-T-100V91	5000-CS	CUSHION SUSPENSION SEAT ASSEMBLY FOR TRACTOR MODELS G-125, D-118, D-145	
1	912-T-101V11	5900-06	Lower Arm Suspension Frame Assembly	1
2	912-T-102	5024	Adjusting Screw	1
3	912-T-103	5025	Ball Thrust Bearing	1
4		5092	7/16 Diameter SAE Washer	1
5	912-T-104	5027	Screw Thrust Plate	1
6		5074	3/8 - 16 x 5/8 UNC Capscrew	4
7		KA-6144	3/8 Lock Washer	4
8		KA-7271	5/16 - 18 x 1 UNC Capscrew	2
9		KA-6145	5/16 Flat Washer	2
10	912-T-105	5007	Suspension Cover	1
11	912-T-106	5026	Hand Knob	1
12		5028	1/8 x 1 Sel-Lock Spring Pin	3
13		5067	10 - 24 x 3/4 Bolts-Sems	4
14		5904	3/16 x 1 Sel-Lock Spring Pin	2
15	912-T-107	5005	5/8 ID x 1-1/8 OD x 18 Ga. Machined Bushing	4
16		634	3/8 UNC Hex Nut	2
17	912-T-108	5013	Spacer Bushing	2
18	912-T-109	5017	9/16 x 11/16 x 3/4 Bushing	2
19		630	3/8 Internal Lock Washer	4
20		KA-6096	3/8 x 1-1/2 UNC Capscrew	2
21		430-P	3/8 x 1-1/8 UNF Capscrew	2
22	912-T-110	480	Ball Bearing	2
23	912-T-111V11	5900-05	Top Arm Welded Assembly	2
24	912-T-112	1818	Rubber Bumper	1
25	912-T-113	5003	5/8 x 7/8 x 1 Bronze Oilite Bushing	2
26		5096	3/16 Square Nut	1
27		5098	3/16 Washer	1
28	912-T-114	5016	Back Bumper	1
29		5075	3/16 x 1 Stove Bolt	1
30		5062	Tinnerman Speednut U-Type 10-24	2
31	912-T-115	5100-04	Top Slide 9fore & aft)	1
32	912-T-116	5101	Slide Mounting Bracket	1
33	912-T-117	5103	Spring	1
34	912-T-118	5100-03	Lock Bolt	1
35		5073	1/4 - 20 x 1/2 UNC Oval Head Bolt	4
36	912-T-119V11	5000-08	Seat Frame	1
37	912-T-120	5411	Tube Plug	2
38	912-T-121	5000-38	Cushion and Cover Assembly	1
39	912-T-122	5000-12	Back Pad	1